

LEO 50 GT TECHNICAL DATA SHEET



| SPECIFICATIONS | LEO 40 GTX |
|--|--------------------------------|
| Working height 200kgs | approx. 50.00 m |
| Cage floor height 200kgs | approx. 48.00 m |
| Lateral outreach to either side at 200kgs | approx. 17.10 m |
| Lateral outreach to either side 80kgs | >20.00 m |
| Safe load on cage | max. 200kgs |
| Working cage rot. hydr. around | approx. 180 degrees |
| Basket change system with basket (LxWxH) | 1.5 x 0.8 x 1.1 m |
| Overall length in travelling position | approx.. 8.30 m |
| Overall width in travelling position min | approx. 1.58 m |
| Overall height in travelling position min. | approx. 1.98 m |
| Trailing load | approx.. 13.5 t |
| Jacked with (centre of jack plate) | approx. 5.00 m |
| Jacked with one side narrow (centre of jack plate) | min. 3.76 m |
| Range of rotation | approx. 450 degrees |
| Restricted range of rotation one side narrow | approx. 120 degrees |
| Size of stabilising jack plate | 0.52 m x 0.27 m |
| Max. load on jack plate | approx. 81 kN |
| Live load in standard work position | approx. 3.90 kN/m ² |
| To be jacked up to a ground slope of | approx. 4.90 kN/m ² |
| Angle of slope | approx. 30% |
| Climbing ability | approx. 30% |
| Height adjustable crawlers | approx. 30% |
| Crawler width | approx. 0.5 m |
| Driving speed | approx. 0.4 m |

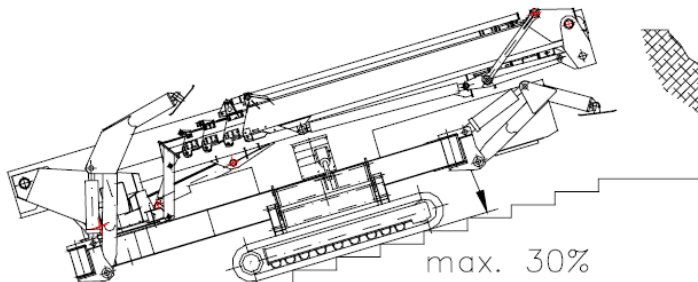
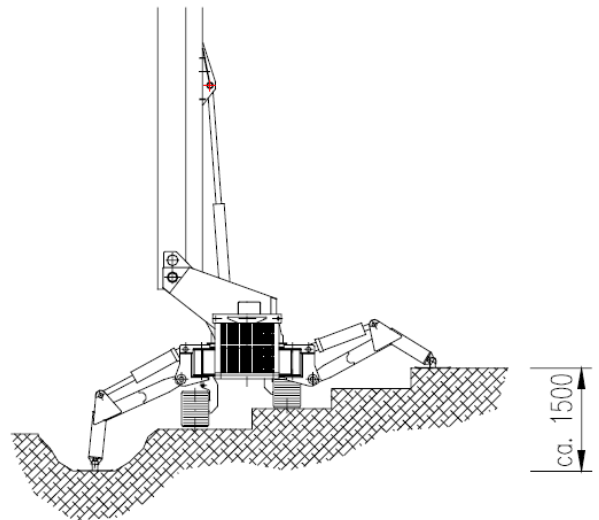
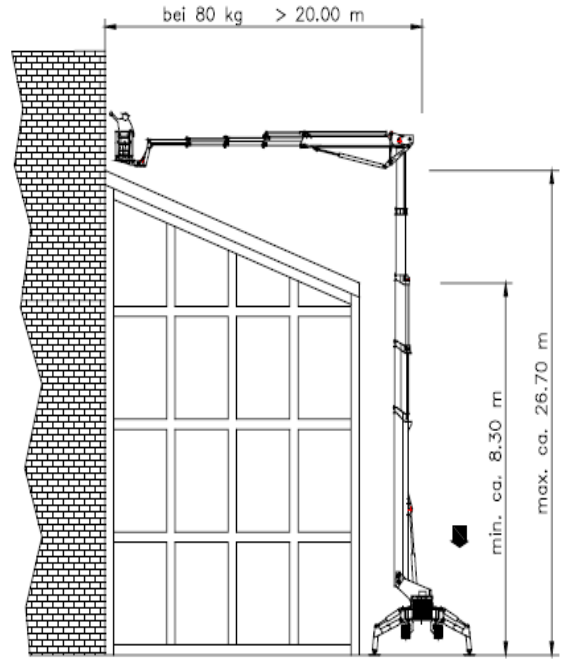
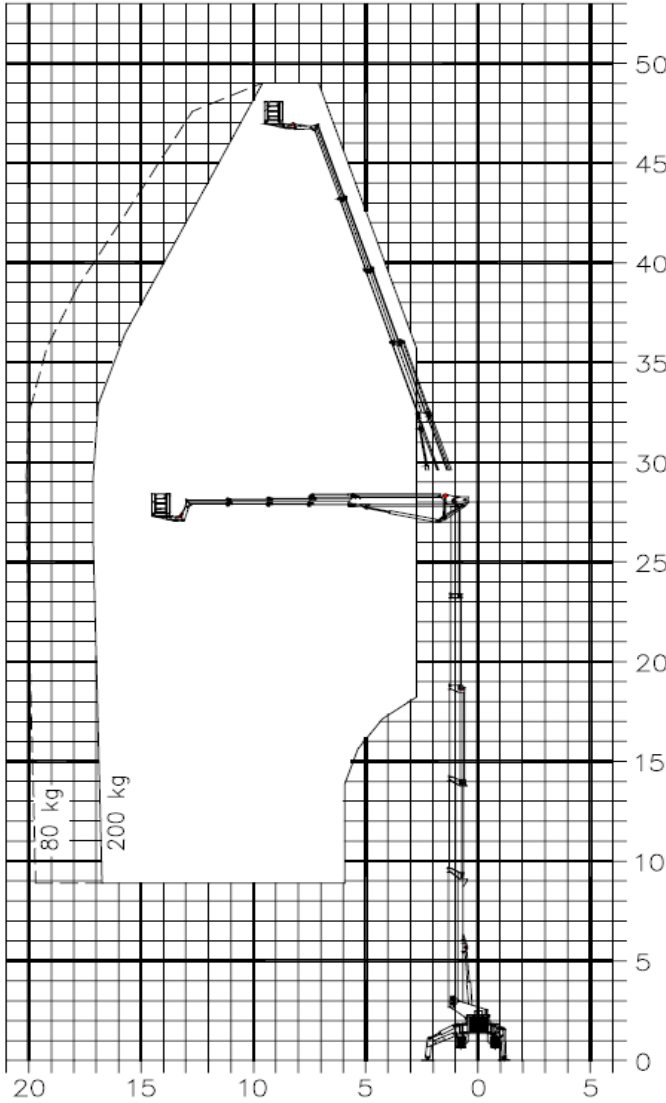
AM ACCESS, UNIT G2, GREAT FENTON BUSINESS PARK, GROVE ROAD, HERON CROSS,
STOKE-ON-TRENT ST4 4LZ.

TEL. 01782 849100 email. amaccess@btconnect.com





The
 Complete
 Access
 Package



AM ACCESS, UNIT G2, GREAT FENTON BUSINESS PARK, GROVE ROAD, HERON CROSS,
 STOKE-ON-TRENT ST4 4LZ.

TEL. 01782 849100 email. amaccess@btconnect.com

