

LEO 25 T TECHNICAL DATA SHEET



SPECIFICATIONS	LEO 25 T
Working Height	approx. 25.00 m
Cage floor Height	approx. 23.00 m
Lateral Outreach to either side at 200kgs:	approx. 12.50 m
Lateral Outreach to either side at 80kgs:	approx. 15.50 m
Safe load on cage	max. 200 kgs
Working cage rot. hydr. around:	approx. 180 degrees
Basket change system with basket (LxWxH)	approx. 1.2 x 0.8 x 1.1m
Overall length in travelling position	approx. 7.22 m
Overall width in travelling position	approx. 1.78 m
Overall height in travelling position	approx. 1.98 m
Trailing load	approx. 2980 kgs
Jacked width (centre of jack plate)	approx. 4.34 m
Jacked width one side narrow (centre of jack plate)	min. 3.48 m
Jacked width both sides narrow (centre of jack plate)	min. 2.61 m
Range of rotation	approx. 450 degrees
Restricted range of rotation one side narrow/both sides narrow	approx. 40 degrees/ 220 degrees
Size of stabilising jack plate	approx. 0.31 m x 0.22 m
Max. load on jack plate per plate	approx. 21.8 kN
Live load in standard work position	approx. 1.54 kN/m ²
Live load in travelling position	approx. 2.27 kN/m ²
To be jacked up to a ground slope of	approx. 23%
Angle of slope	approx. 28%
Climbing ability	approx. 30%
Height adjustable crawlers	approx. 0.2m
Crawler width	approx. 0.2m
Driving speed	approx. 1.5m

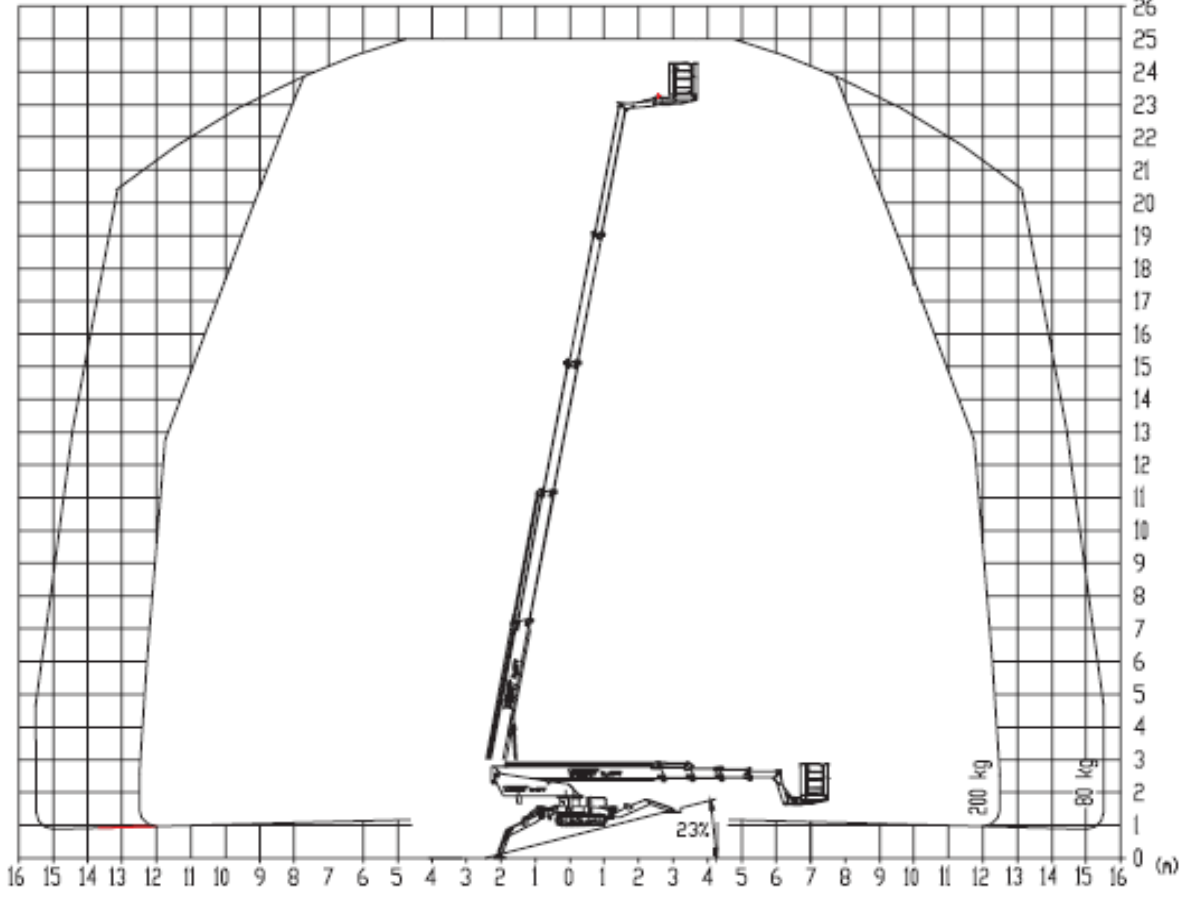
AM ACCESS, UNIT G2, GREAT FENTON BUSINESS PARK, GROVE ROAD, HERON CROSS,
STOKE-ON-TRENT ST4 4LZ.

TEL. 01782 849100 email. amaccess@btconnect.com

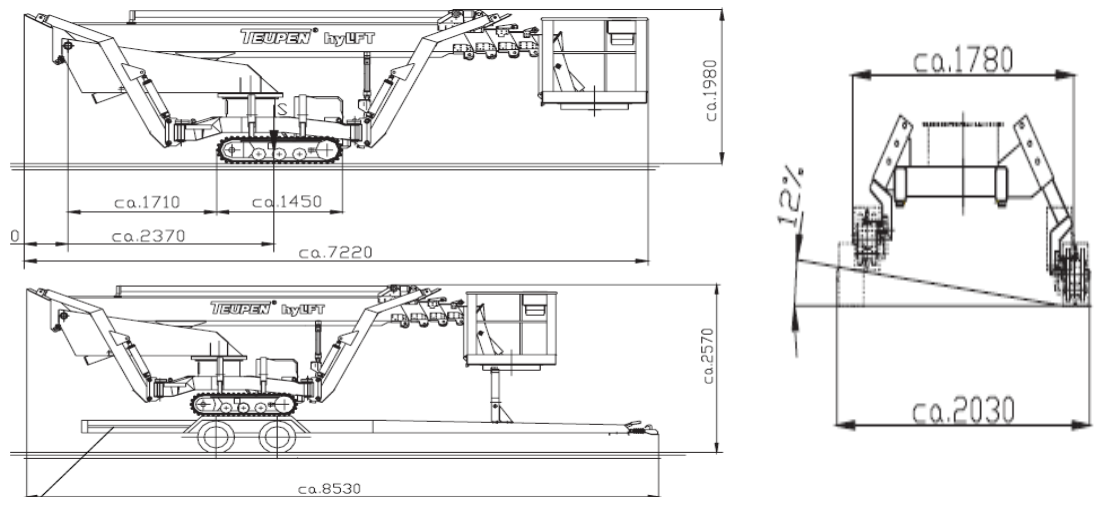




The Complete Access Package



dimensions in metres



AM ACCESS, UNIT G2, GREAT FENTON BUSINESS PARK, GROVE ROAD, HERON CROSS,
 STOKE-ON-TRENT ST4 4LZ.
 TEL. 01782 849100 email. amaccess@btconnect.com

