

## LEO 23 GT TECHNICAL DATA SHEET



### SPECIFICATIONS

### LEO 23 GT

Working Height	approx. 23.00 m
Platform Height	approx. 21.00 m
Lateral Outreach	approx. 11.20 m
Safe load on cage	max. 200 kg
Rotating working cage	180 degrees
Overall length in travelling position	min. 6.20 m
Minimum clearance width	min. 0.98 m
Overall height in travelling position	min. 1.98 m
Net weight	approx. 3010 kgs
Standard jacked area (centre of plate, L x W)	min. 4.10 m x 4.30 m
Min. jacked area (centre of plate)	min 2.30 m
Max. load on jack plate per plate	approx. 22.4 kN
Surface load in standard work position	approx. 1.8 kN/m <sup>2</sup>
Range of rotation standard jacked area	360 degrees
Limited range of rotation (both sides narrow)	2 x 15 degrees
Limited range of rotation (one side narrow)	192 degrees
Max. ground slope	approx. 26 %
Climbing ability (in direction of traffic)	approx. 30 %
(crosswise to direction of traffic)	approx. 26 %
Driving speed	approx. 1.3 km/h

AM ACCESS, UNIT G2, GREAT FENTON BUSINESS PARK, GROVE ROAD, HERON CROSS,  
STOKE-ON-TRENT ST4 4LZ.

TEL. 01782 849100 email. [amaccess@btconnect.com](mailto:amaccess@btconnect.com)





# AM ACCESS

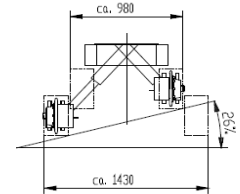
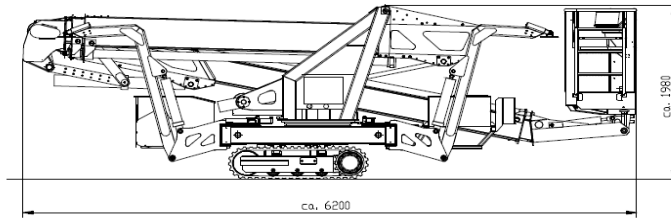


The

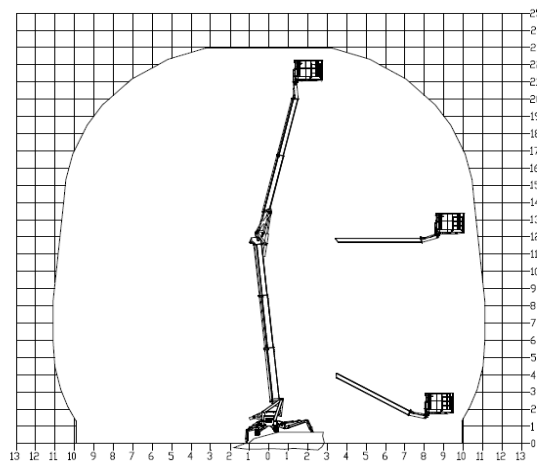
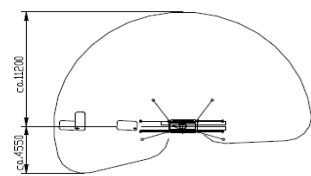
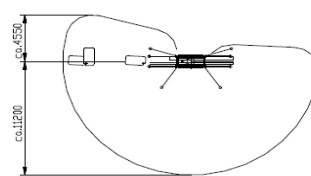
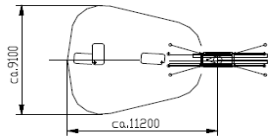
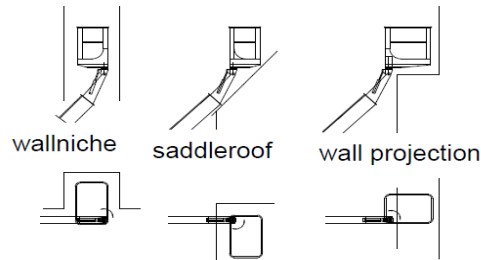
Complete

Access

Package



Examples access technology  
Rotation of basket 180° - offset basket



AM ACCESS, UNIT G2, GREAT FENTON BUSINESS PARK, GROVE ROAD, HERON CROSS,  
STOKE-ON-TRENT ST4 4LZ.



TEL. 01782 849100 email. [amaccess@btconnect.com](mailto:amaccess@btconnect.com)